

TRIAGE SORT

STEP 1: Calculate the GLASGOW COMA SCORE (GCS)

A Eye opening:

Spontaneous	4
To voice	3
To pain	2
None	1

B Verbal response:

Orientated	5
Confused	4
Inappropriate	3
Incomprehensible	2
No response	1

C Motor response:

Obeys commands	6
Localises	5
Pain withdraws	4
Pain flexes	3
Pain extends	2
No response	1

$$\text{GCS} = \text{A} + \text{B} + \text{C}$$

STEP 2: Calculate the TRIAGE SORT SCORE

X GCS

13 - 15	4
9 - 12	3
6 - 8	2
4 - 5	1
3	0

Y Respiratory rate

10 - 29	4
≥ 30	3
6 - 9	2
1 - 5	1
0	0

Z Systolic BP

≥ 90	4
76 - 89	3
50 - 75	2
1 - 49	1
0	0

$$\text{TRIAGE SORT CODE} = \text{X} + \text{Y} + \text{Z}$$

STEP 3: Assign a triage PRIORITY

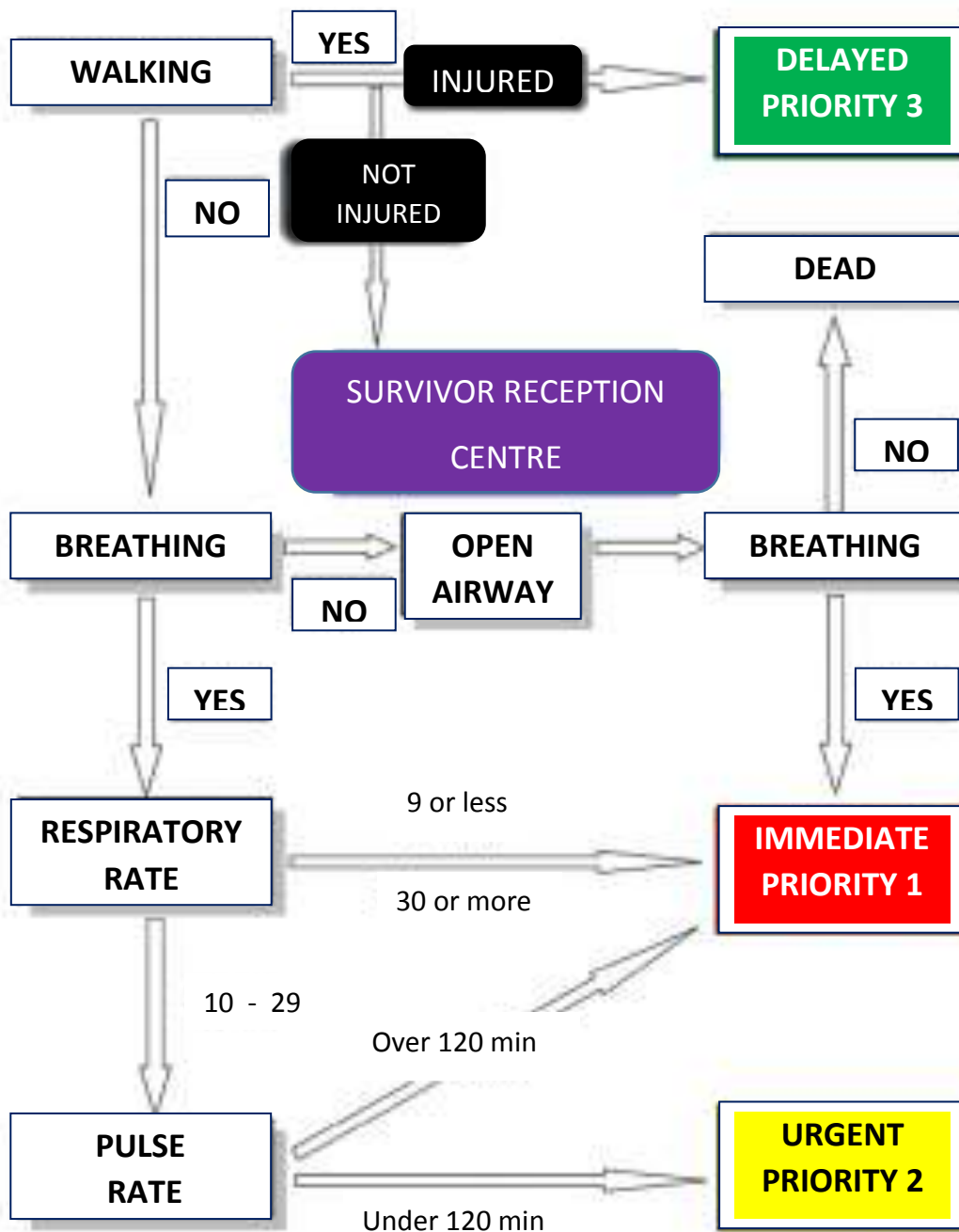
12 = PRIORITY 3

11 = PRIORITY 2

<10 = PRIORITY 1

STEP 4: Upgrade PRIORITY at discretion of senior clinician, dependant on the anatomical injury/working diagnosis

TRIAGE SIEVE



Capillary refill test (CRT) is an alternative to pulse rate, but it unreliable in the cold or dark: if it is used, a CRT of > 2 seconds indicates **PRIORITY 1**